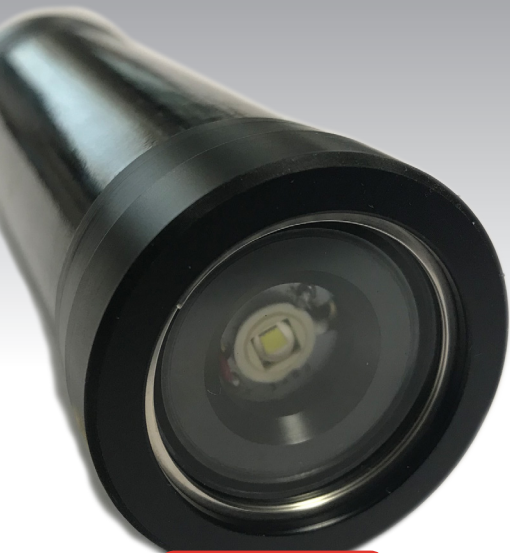




ROVTECH SOLUTIONS ESTD 2007



P/N: # RSL 2110

Carbon Fibre Micro Seabeam LED Light

The new innovative RSL Carbon Fibre Seabeam LED Light is part of Rovtech Solutions growing family of products designed to be a lightweight alternative to the standard stainless-steel products available.

With all new products, the Seabeam LED has been rigorously tested, CE marked and comes with individual pressure test certificate. The carbon fibre housing has been pressure tested to 250m over multiple cycles (500+) and has proven to be a robust material, able to withstand everyday use.

Weighing less than 300g in air (approx. 120g in water) it makes an ideal Divers Hat Light or as a light source when accompanied with the RSL Lightweight Carbon Fibre Deployment Poles. The Seabeam LED can be supplied with a bespoke bracket dependent on the needs of the application.

Features and Benefits

Lightweight
Compact
Wet and Dry
200m Depth Rating
Thermal Protection

Applications

Diving Applications
General Underwater Inspection
ROV Systems
Underwater Systems

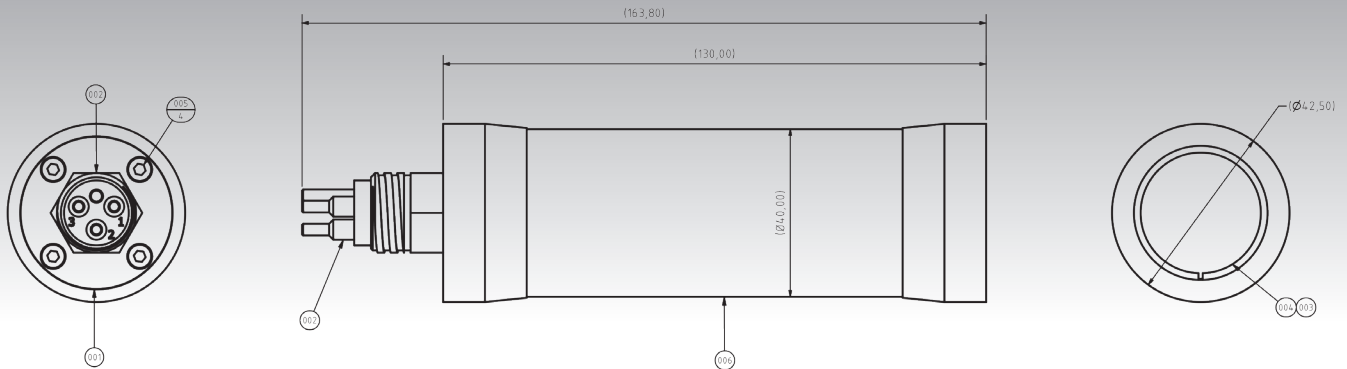
Options

RSL Carbon Fibre Tilt Unit
RSL Carbon Fibre Pole Deployment System
Various Submersible Connectors
Custom Wiring
Various, and Custom Brackets

This product is CE Marked and shipped with a Certificate of Conformity and Pressure Test Certificate



ROVTECH SOLUTIONS LTD



This product is an addition to the RSL Carbon Fibre Range:

• RSL 1389 Carbon Fibre Micro Seacam • RSL 1403 Carbon Fibre Micro Seabeam • RSL 0182 Powered Carbon Fibre Deployment Poles (up to 3m) • RSL 1176 Passive Carbon Fibre Deployment Poles (Up to 3m) • RSL 1194 Control Console System

<i>Item</i>	LED Light	<i>Connectors</i>	Underwater Connector MCBH3M (Client Specified Connector on demand)
<i>Style</i>	Bullet	<i>Input Voltage</i>	12-24 Vdc
<i>Dimensions (Ø x L)</i>	42.5mm Ø (max) x 130mm long (Excluding Connector)	<i>Amps (max)</i>	TBC
<i>Weight</i>	< 300g in Air ~ 120g in Water	<i>Port</i>	Tough Glass
<i>Material</i>	Carbon Fibre & Acetal Ends	<i>Illumination</i>	TBC
		<i>Pressure Rating</i>	25 Bar